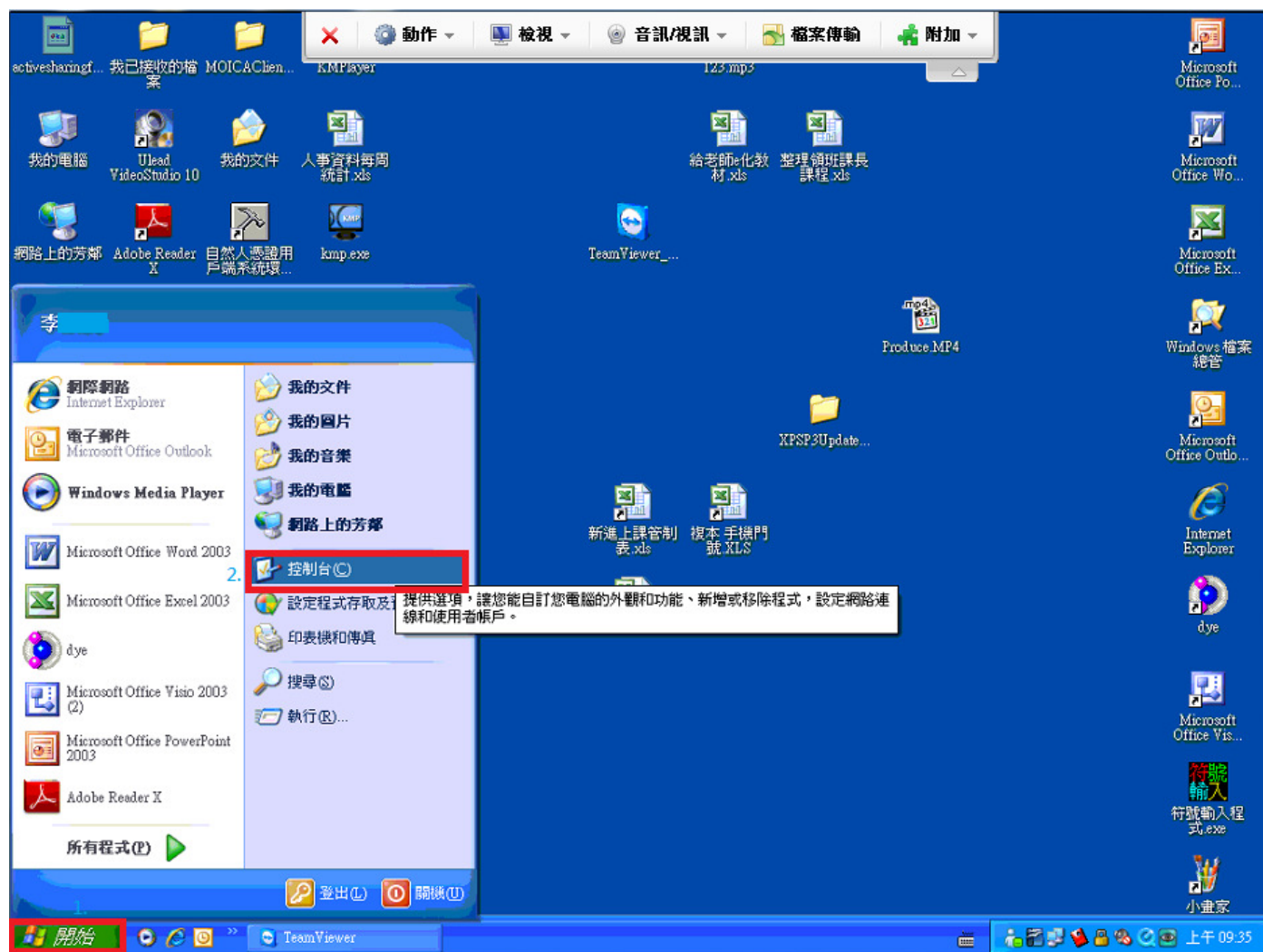
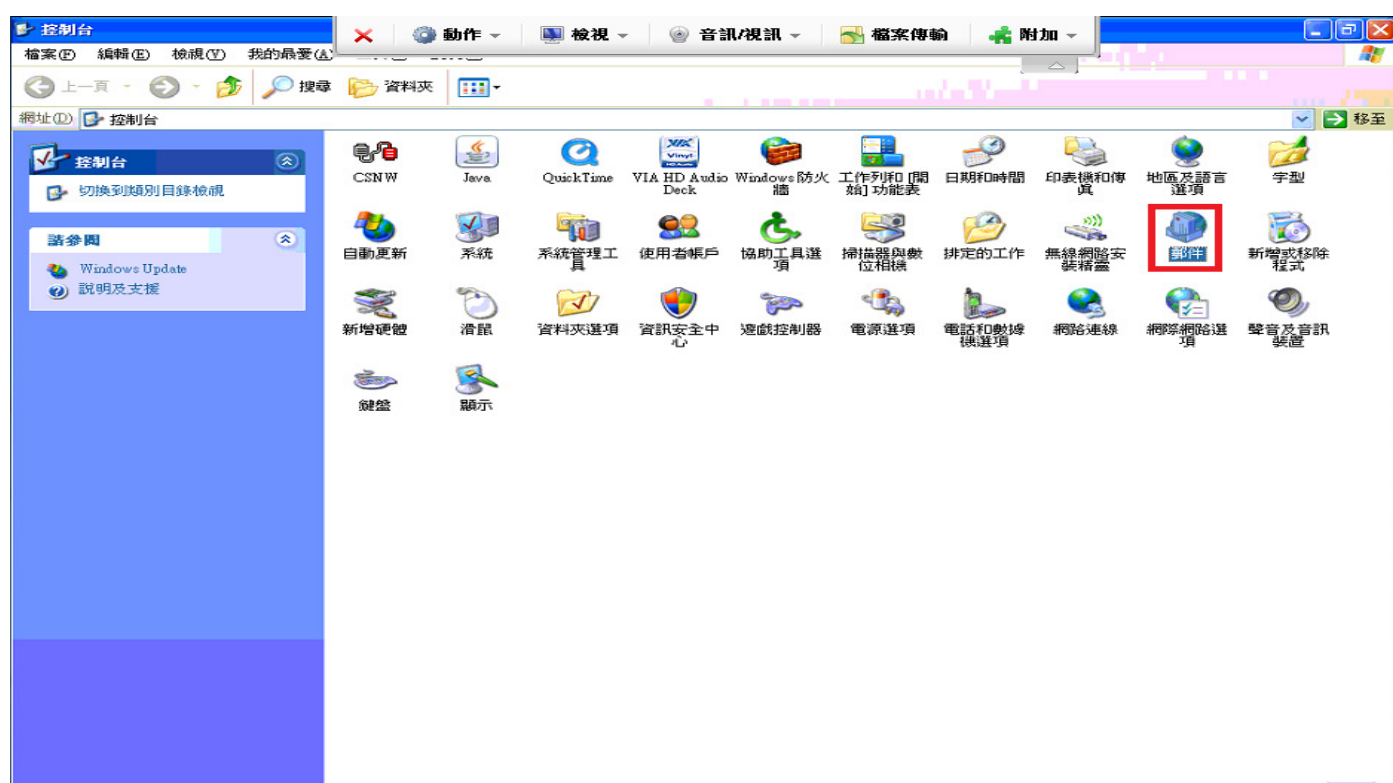


Outlook 2003 連接 Exchange 2010 -信箱設定

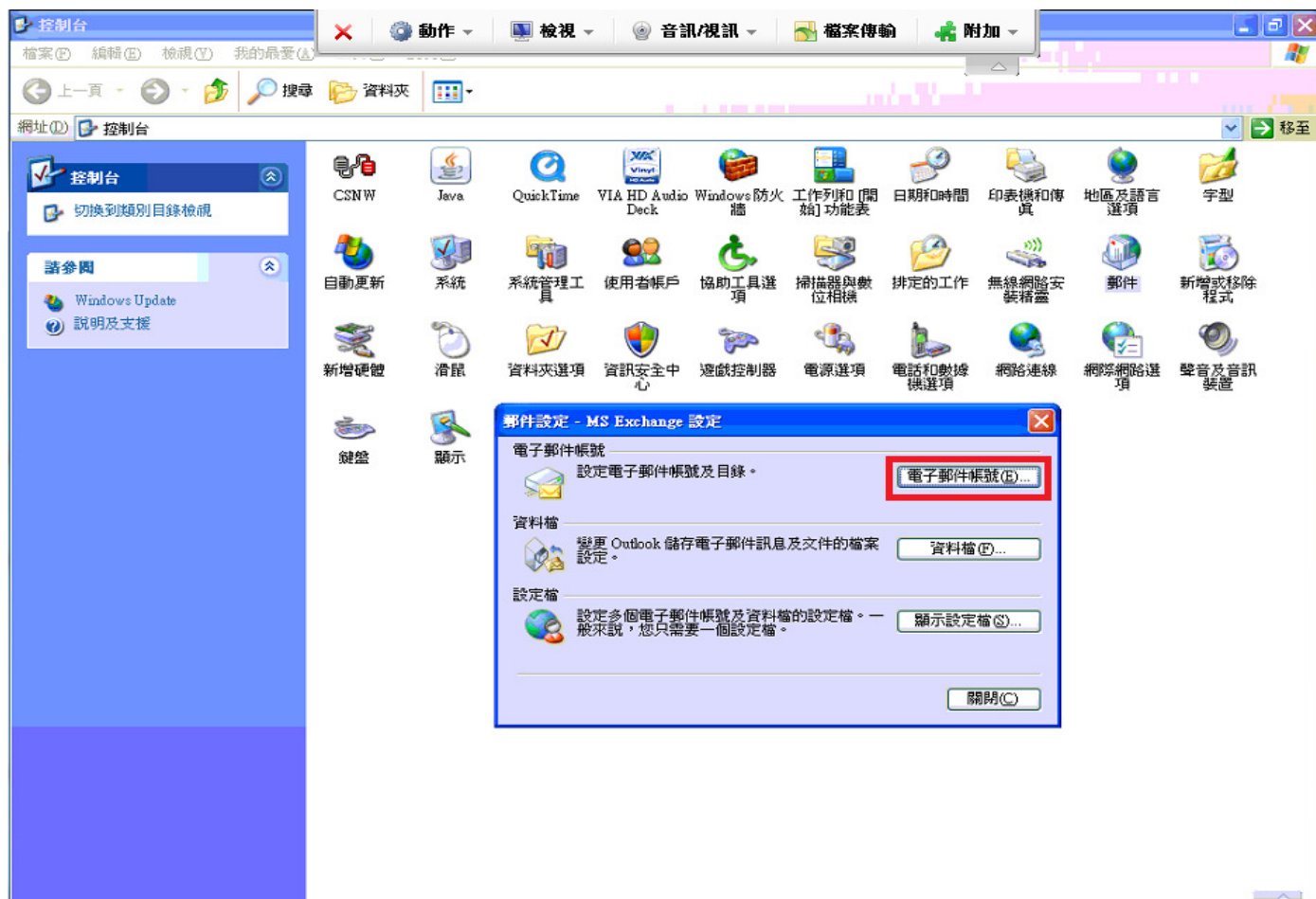
[步驟 1] 請依照下面畫面操作



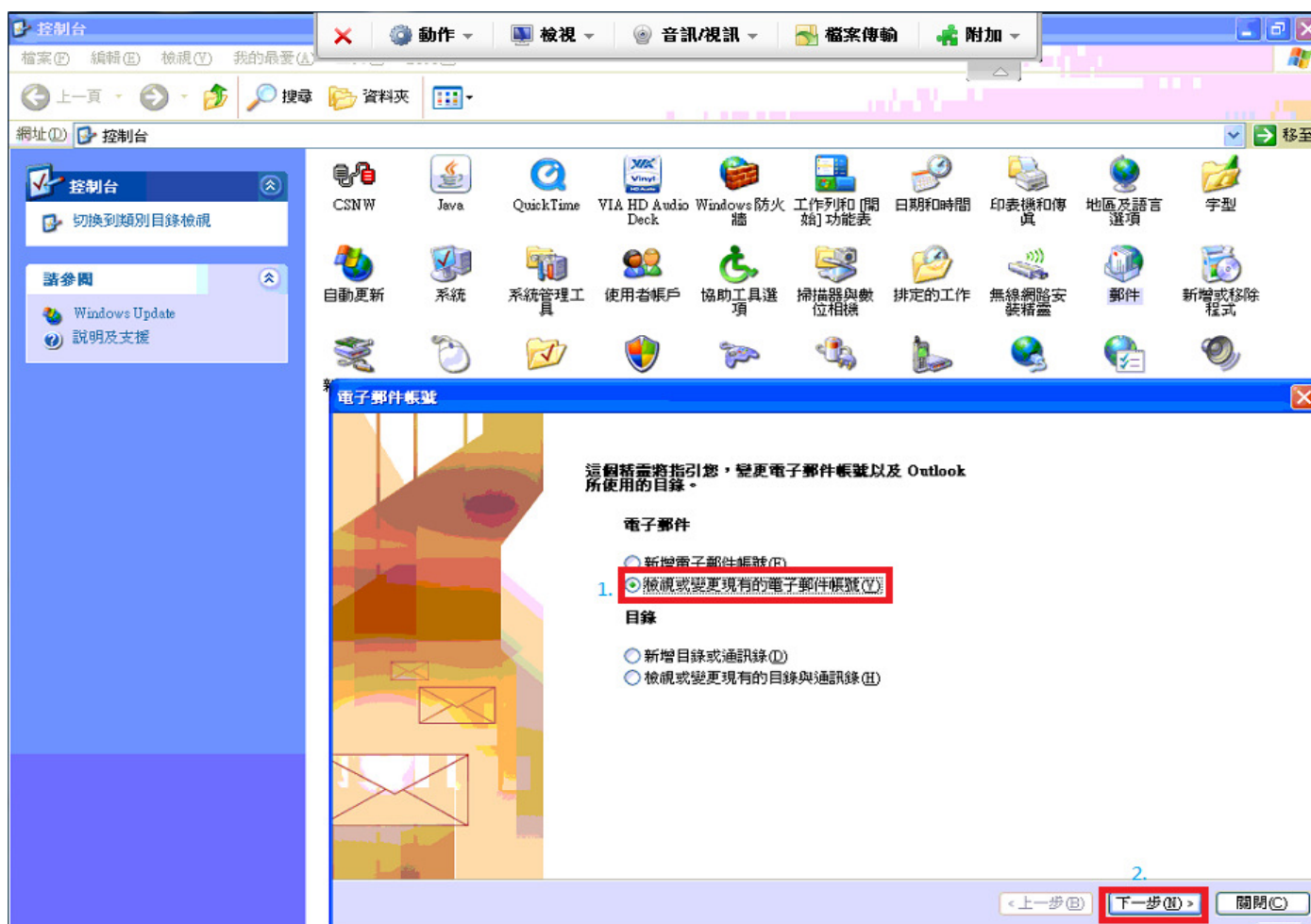
[步驟 2] 請依照下面畫面操作



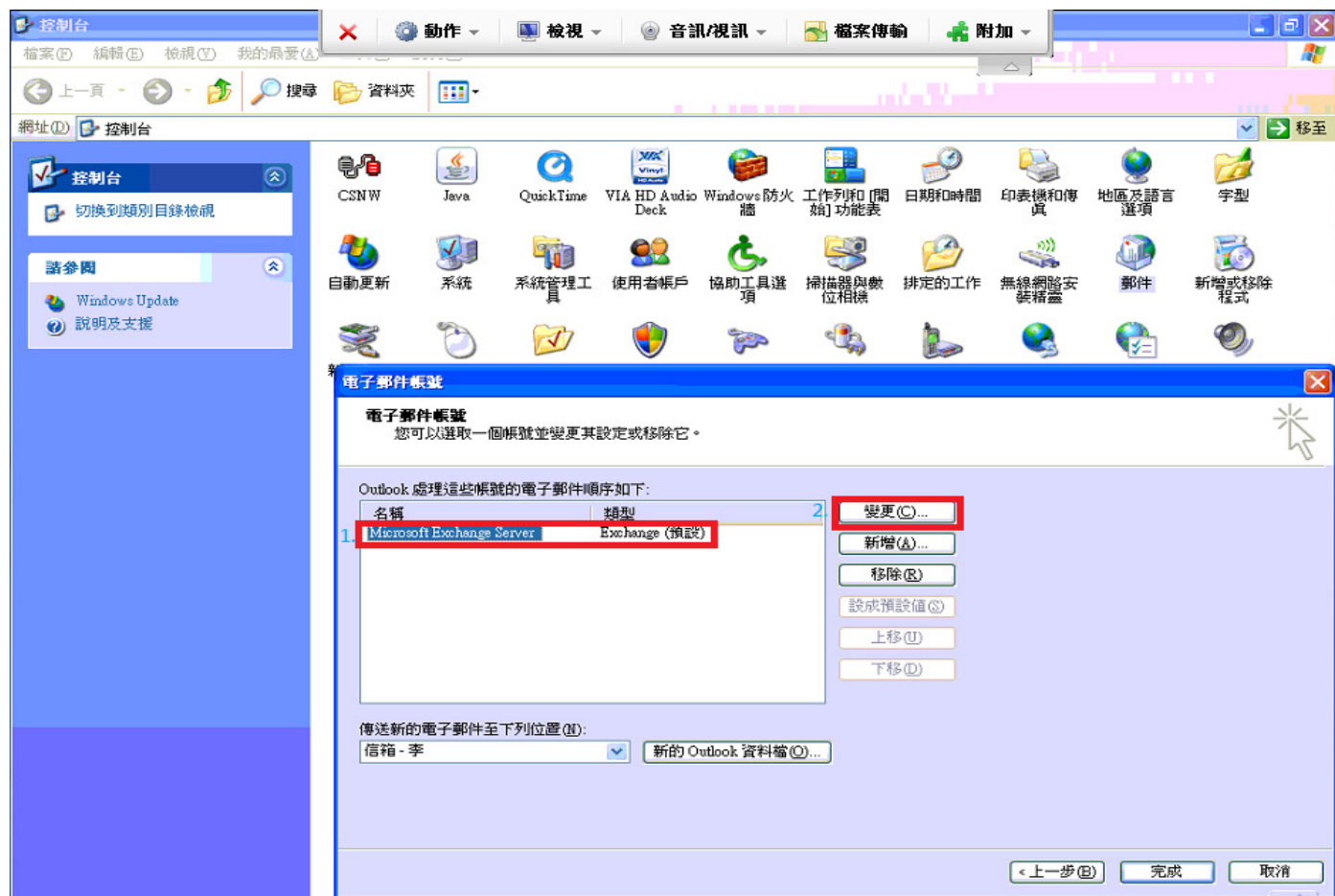
[步驟 3]請依照下面畫面操作



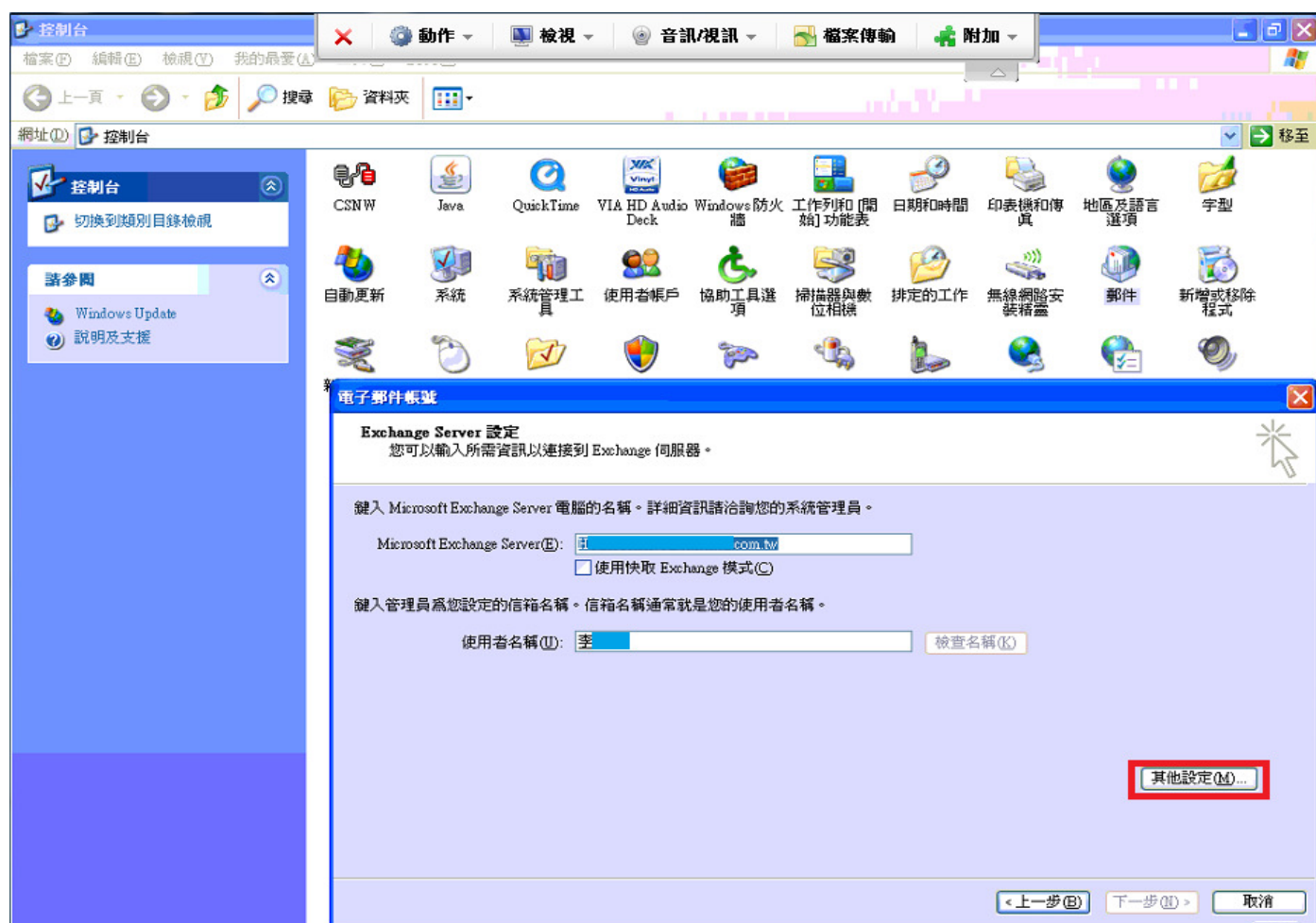
[步驟 4]請依照下面畫面操作



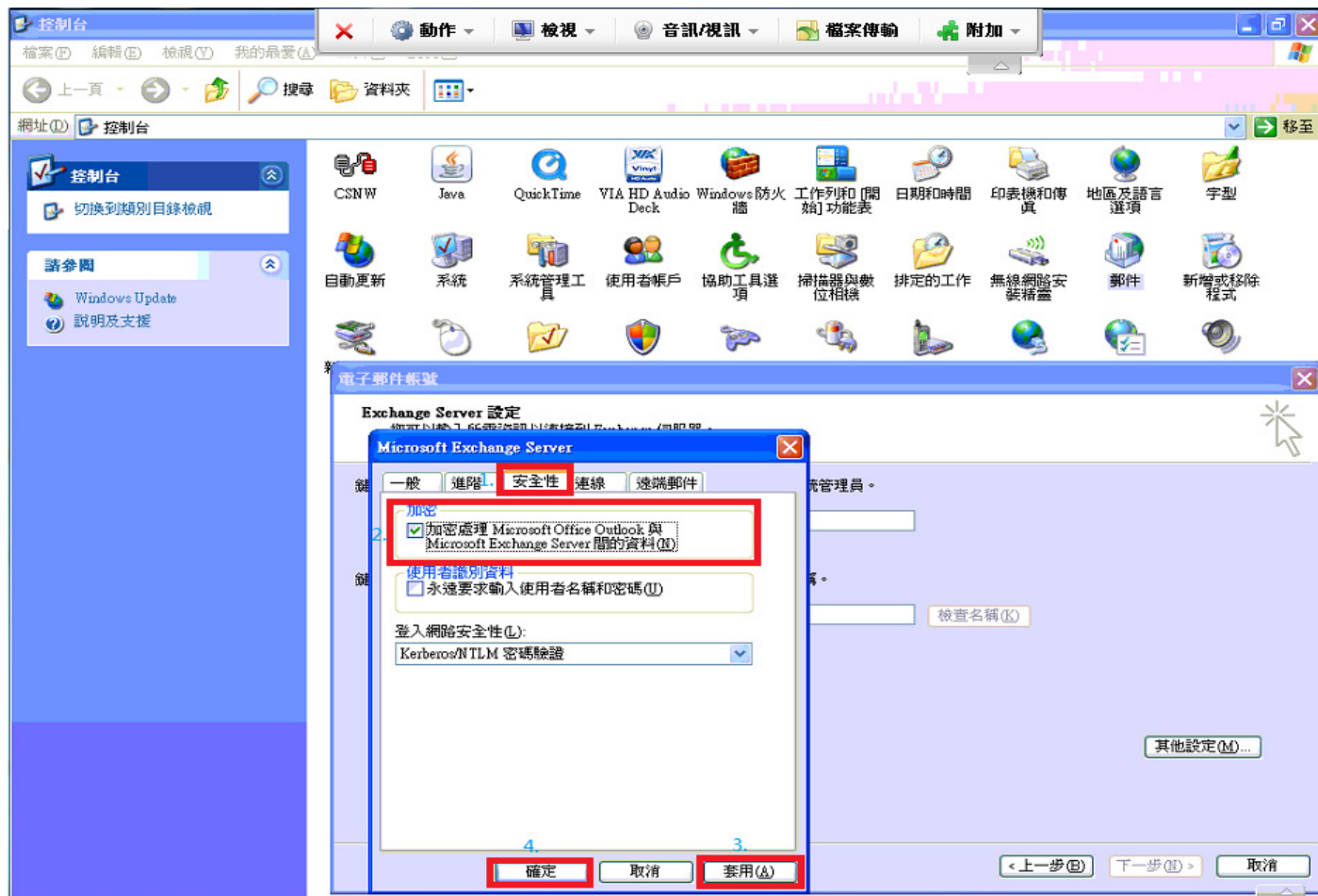
[步驟 5]請依照下面畫面操作



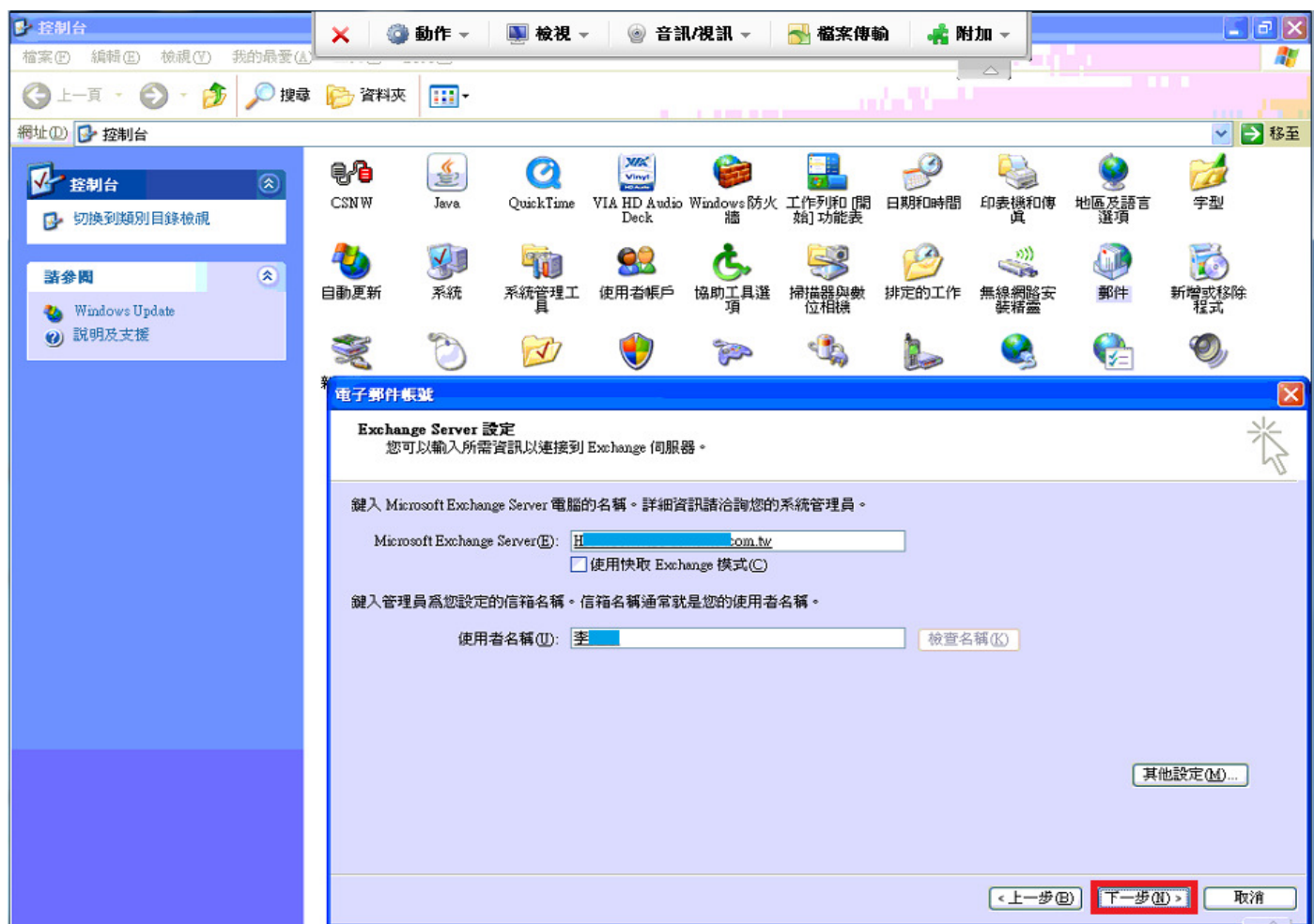
[步驟 6]請依照下面畫面操作



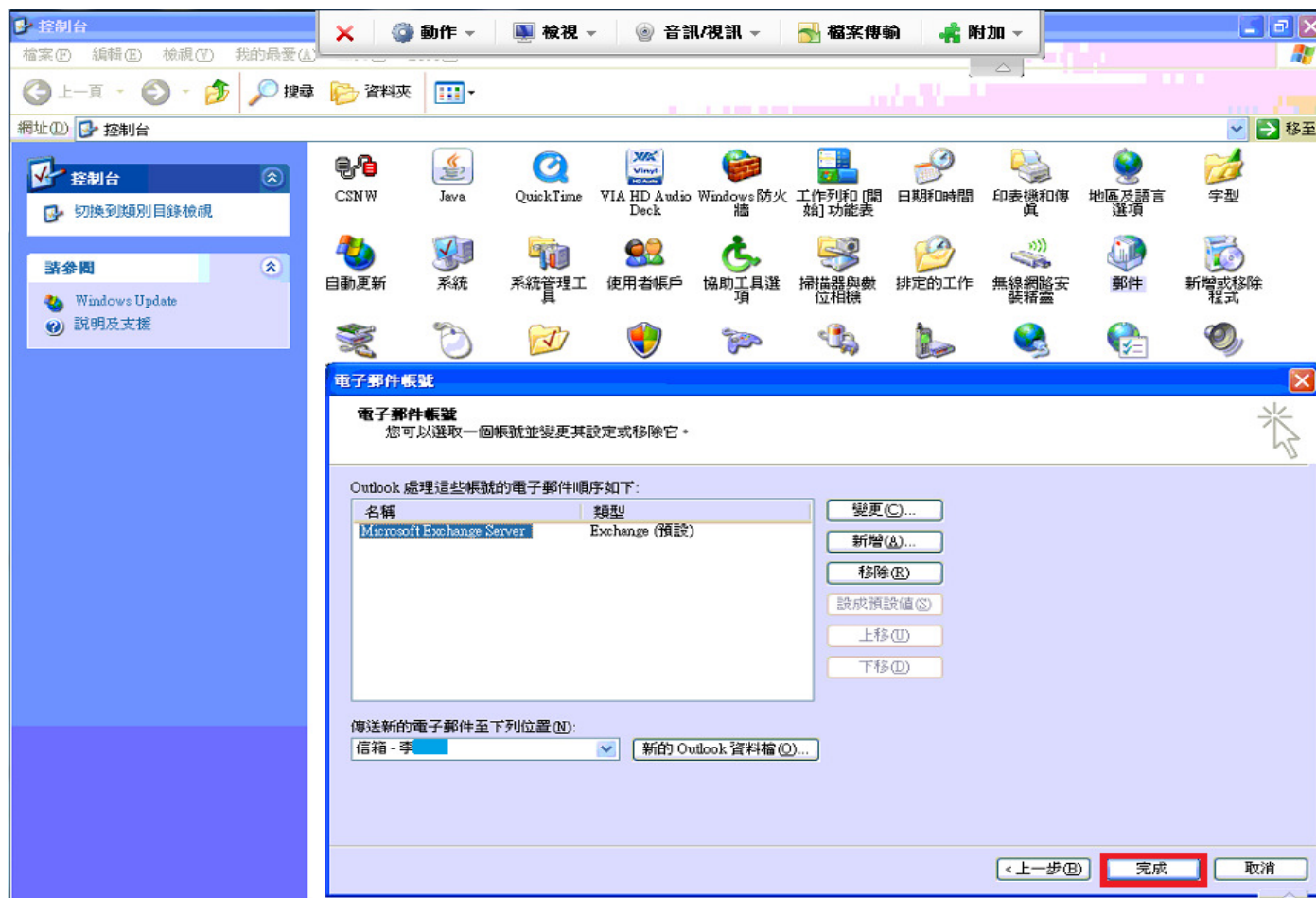
[步驟 7]請依照下面畫面操作



[步驟 8]請依照下面畫面操作



[步驟 9]請依照下面畫面操作



[步驟 10]請依照下面畫面操作

