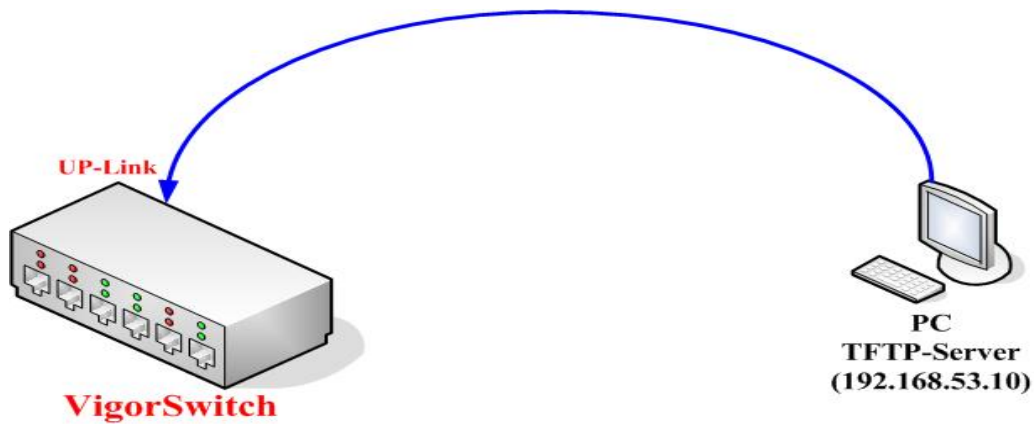


# 如何更新 VigorSwitch 韌體

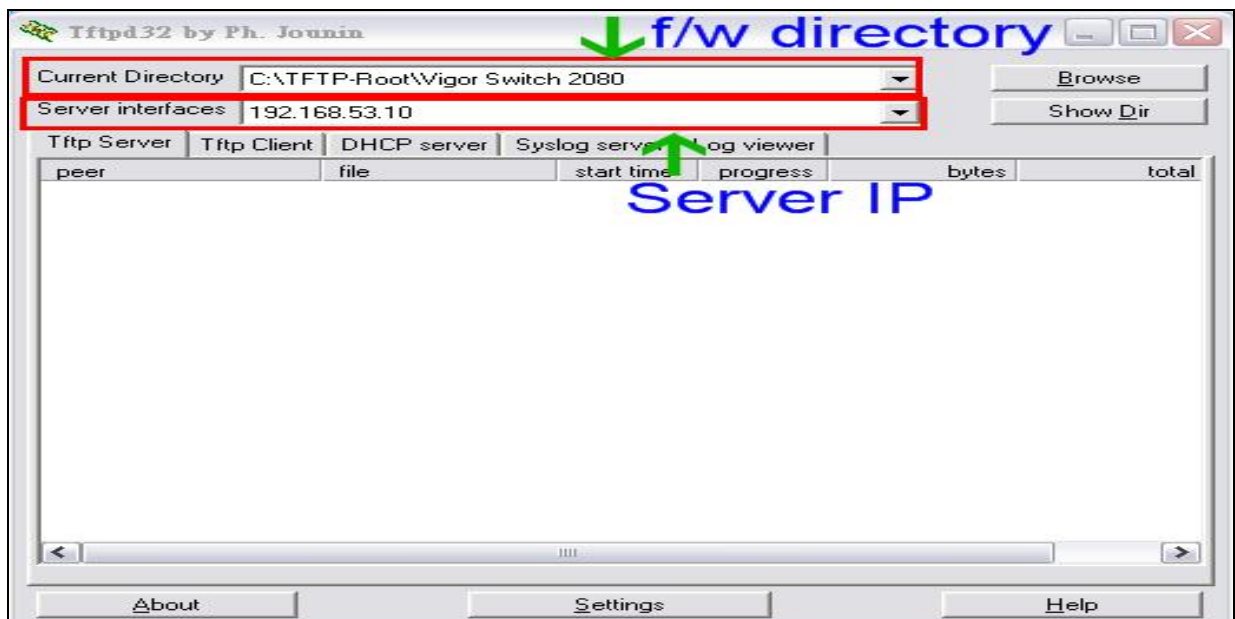
下圖為韌體更新方向示意圖。



1. 將韌體複製到指定位置檔案夾 – C:\TFTP-Root\VigorSwitch2080.



2. 執行 TFTP232 Server 軟體並設定韌體目錄及伺服器 IP 位址。



3. 自 VigorSwitch 設定頁面開啓 **TFTP Server**，輸入 TFTP 伺服器 IP 位址然後按下 **Apply**。

The screenshot shows the DrayTek VigorSwitch G2080 configuration interface. On the left, a sidebar menu lists various settings: System, Port, Mirror, Bandwidth, QoS, Loop Detection, SNMP, IGMP Snooping, Max. Packet Length, DHCP Boot, VLAN, MAC Table, GVRP, STP, Trunk, 802.1X, Alarm, Configuration, Diagnostics, **TFTP Server** (highlighted with a red box and a blue arrow labeled '1.'), Log, Firmware Upgrade, Reboot, and Logout. The main content area is titled 'TFTP Server'. It contains a 'Server' input field with the value '192.168.53.10' (indicated by a blue arrow labeled '2.') and an 'Apply' button (indicated by a blue arrow labeled '3.'). At the top left, there is an 'Auto Logout' dropdown menu set to 'OFF'. At the top right, there is a small graphic of the VigorSwitch G2080 device.

4. 開啓 **Firmware Upgrade** 頁面。在 Path and Filename 欄位中輸入韌體檔名，然後按 **Upgrade**。

The screenshot shows the DrayTek VigorSwitch G2080 configuration interface. On the left, a sidebar menu lists various settings: System, Port, Mirror, Bandwidth, QoS, Loop Detection, SNMP, IGMP Snooping, Max. Packet Length, DHCP Boot, VLAN, MAC Table, GVRP, STP, Trunk, 802.1X, Alarm, Configuration, Diagnostics, TFTP Server, Log, **Firmware Upgrade** (highlighted with a red box and a blue arrow labeled '1.'), Reboot, and Logout. The main content area is titled 'Firmware Upgrade'. It contains a 'TFTP Server' input field with the value '192.168.53.10' and a 'Path and Filename' input field with the value 'gs2108c\_draytek\_v3.54.img' (indicated by a blue arrow labeled '2.'). Below these fields is an 'Upgrade' button (indicated by a blue arrow labeled '3.'). At the top left, there is an 'Auto Logout' dropdown menu set to 'OFF'. At the top right, there is a small graphic of the VigorSwitch G2080 device.

5. 更新完畢後，請按 **Save and Reboot**，以便儲存並重新啟動 VigorSwitch。

### Firmware Upgrade

<b>TFTP Server</b>	192.168.53.10
<b>Path and Filename</b>	gs2108c_draytek_v3.54.img

**Upgrade**

----- >>> -----

### Software Upgrade Successful

The firmware upgrade has been done already.  
Do you want to reboot this system to have the setting taken effect?

→ **Save and Reboot**


Saving Configuration and Reboot

Reboot

Reboot the System

6. 請檢查韌體版本是否無誤，若不正確，請再次執行步驟 3~5。

**DrayTek**  
Auto Logout 3 min



**VigorSwitch G2080**  
System  
Port  
Mirror  
Bandwidth  
QoS  
Loop Detection  
SNMP  
IGMP Snooping  
Max. Packet Length  
DHCP Boot  
VLAN  
MAC Table  
GVRP  
STP  
Trunk  
802.1X  
Alarm  
Configuration  
Diagnostics  
TFTP Server  
Log  
Firmware Upgrade  
Reboot  
Logout

#### System Information

Model Name	VigorSwitch G2080
System Description	8 Gigabit Port L2 Managed Switch
Location	
Contact	
Device Name	VigorSwitch G2080
System Up Time	0 Days 0 Hours 13 Mins 35 Secs
Current Time	Fri Jun 05 16:27:26 2009
BIOS Version	v1.07
Firmware Version	v3.54
Hardware-Mechanical Version	v1.01 - v1.01
Serial Number	030F1E000126
Host IP Address	192.168.53.11
Host MAC Address	00-50-7F-36-75-50
Device Port	UART * 1, TP * 6, Dual-Media Port(RJ45/SFP) *
RAM Size	16 M
Flash Size	2 M